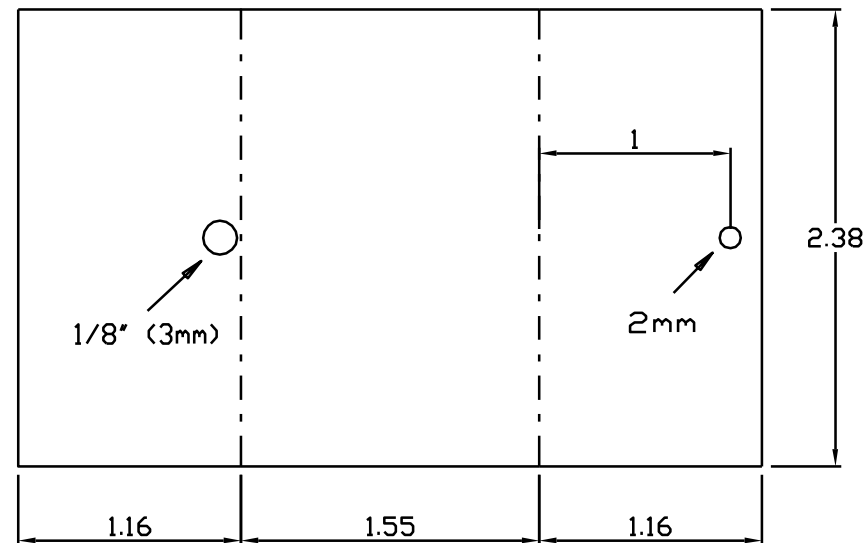
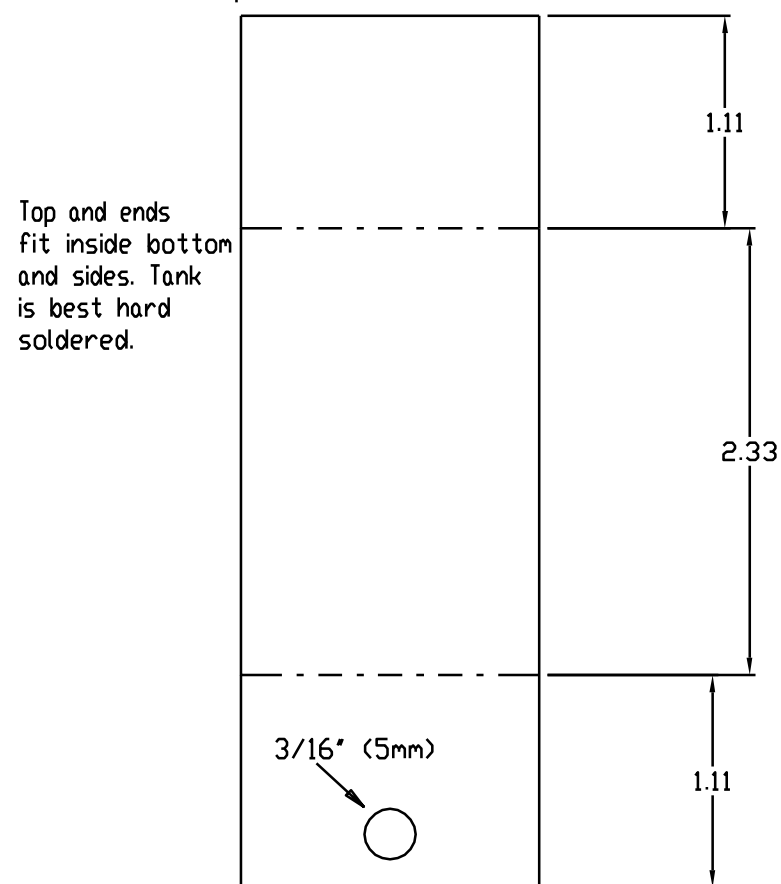


Methylated Spirit Tank

bottom of tank and sides from thin brass

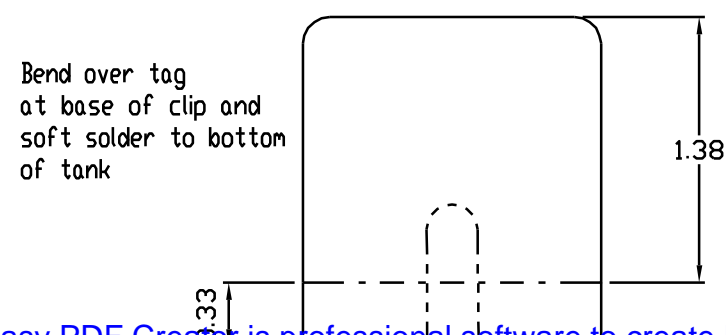


top of tank and ends from thin brass



Top and ends fit inside bottom and sides. Tank is best hard soldered.

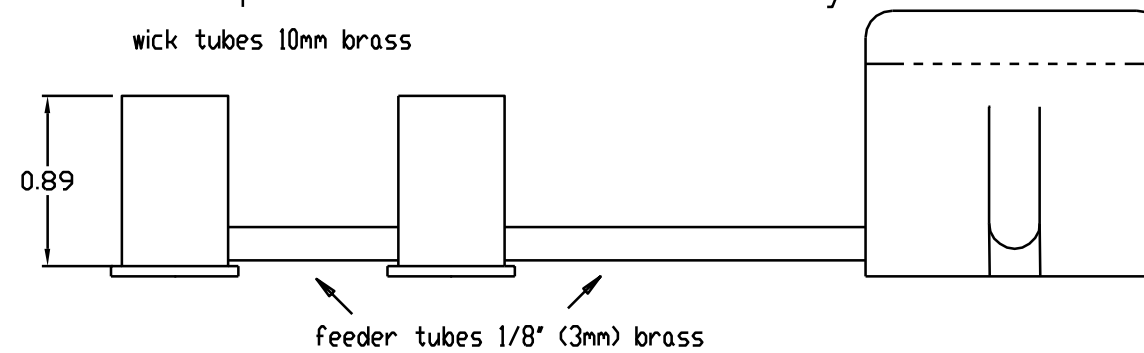
Spring clip, thin brass, one either side



Bend over tag at base of clip and soft solder to bottom of tank

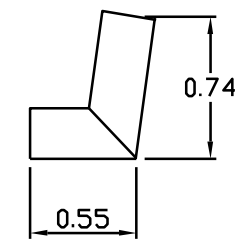
Complete Burner Assembly

wick tubes 10mm brass



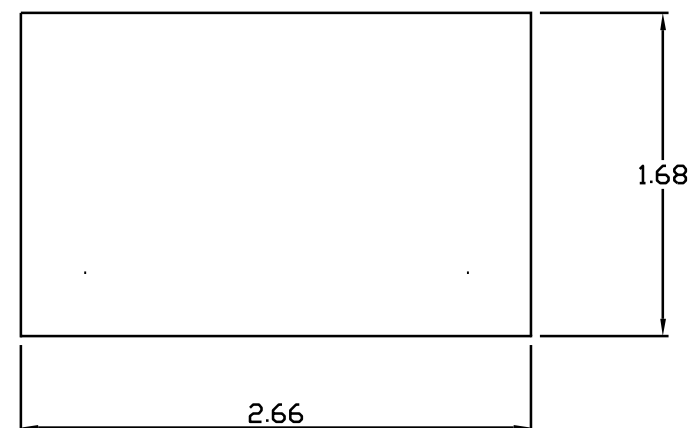
filler from

3/16 inch (5mm) brass tube



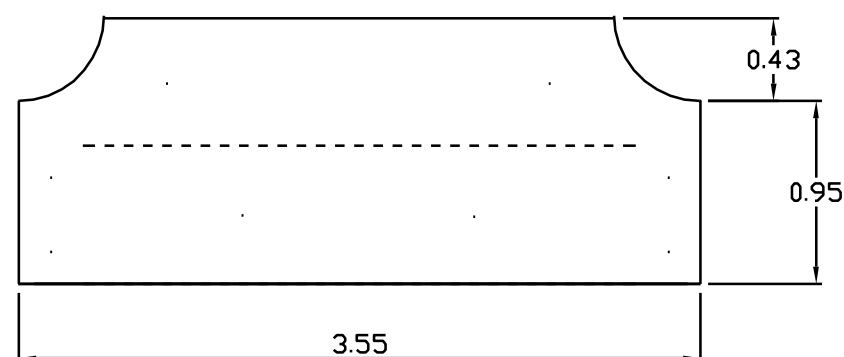
Front & Rear plates

1/16 inch (1.5mm) steel
rivet to buffer beam

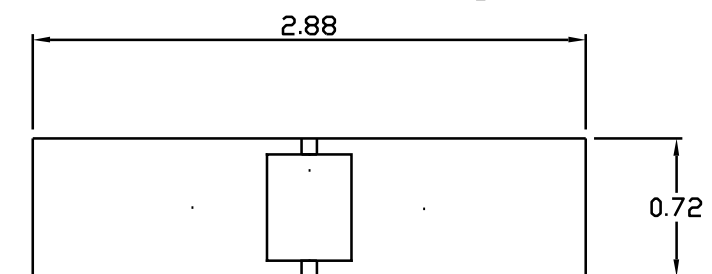


Buffer Beam

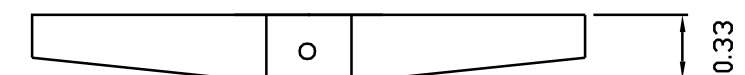
bolt to frames



Buffer Coupling



Tufnol or hardwood, bolt to buffer beam



1.5mm for coupling pin

make pin from 25mm nail

suggested position of bolts/rivets

RESCALED TO 7/8N2 1:13.7

2.10.07

Burner and Buffer Beams for de Winton
Dave Watkins
9/8/97